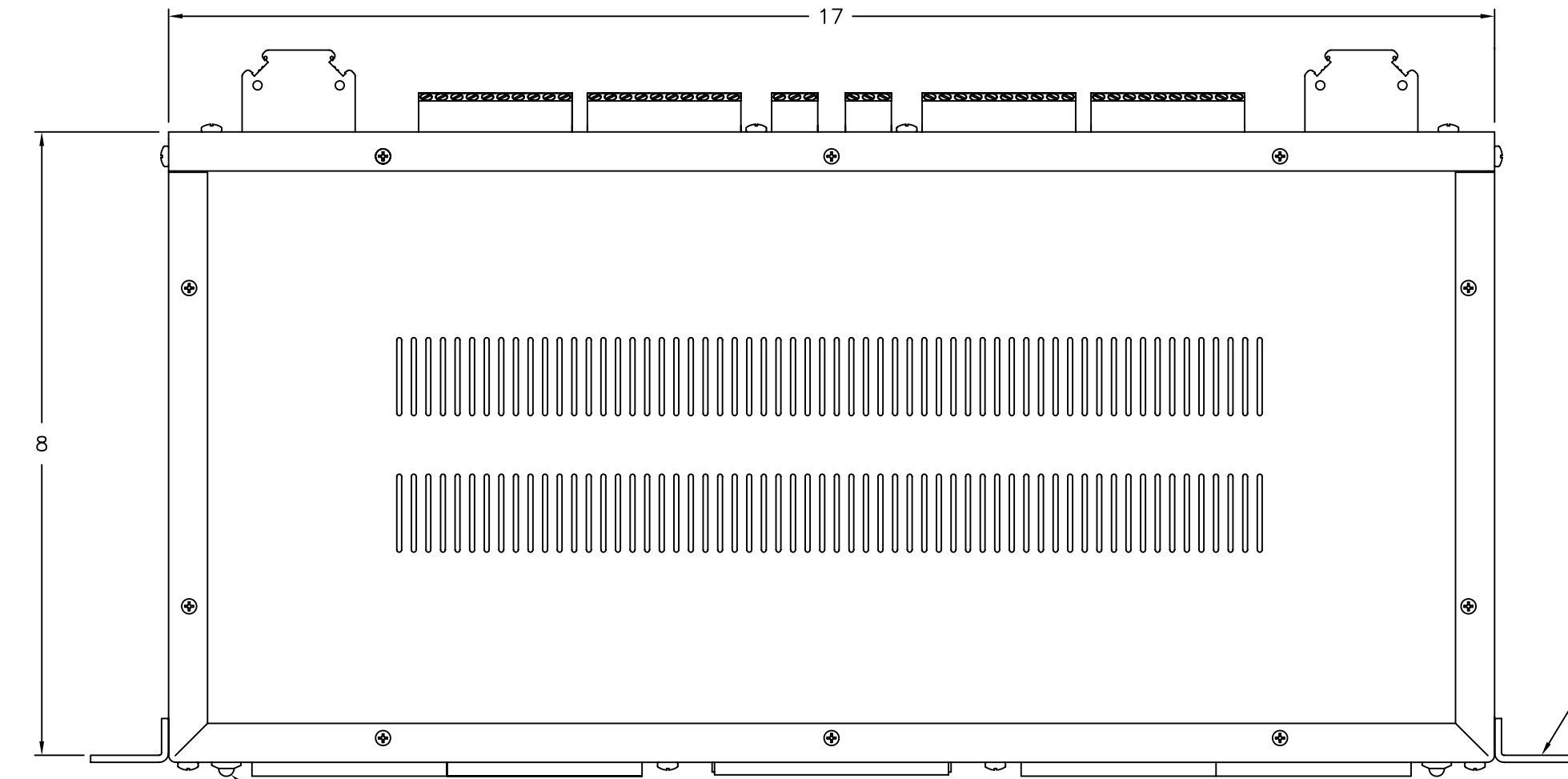
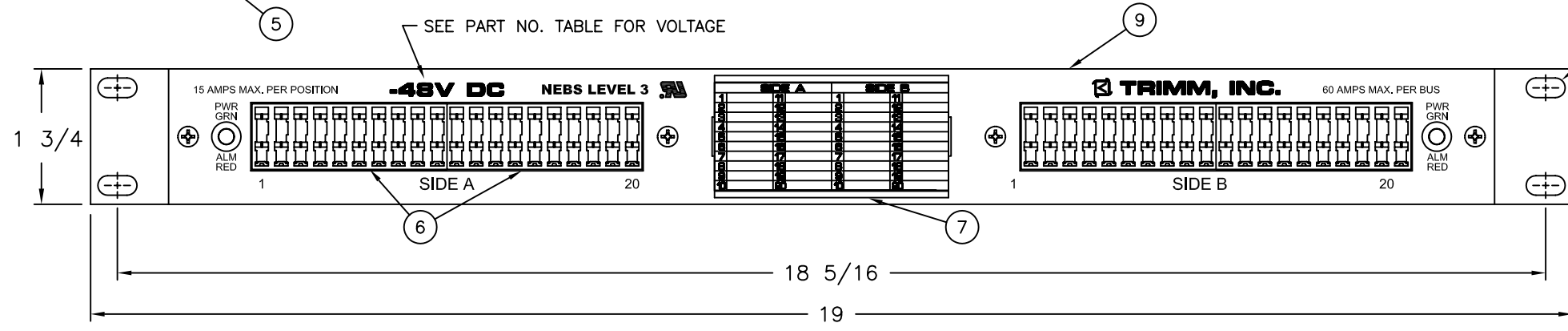
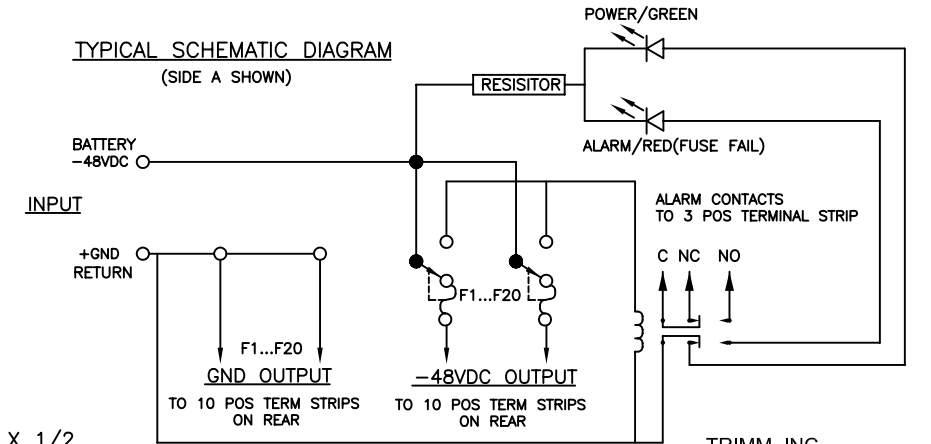


REAR VIEW ROTATED



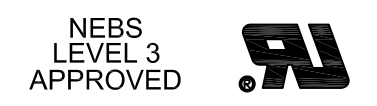
- NOTES:
- ① - INPUT: SET SCREW STYLE WITH DUAL INPUT - 6 AWG MAX WIRE SIZE. RECOMMENDED TORQUE 14 IN-LBS.
 - ② - EQUIPMENT CONNECTIONS: SET SCREW TYPE ACCEPTS 26-14 AWG. RECOMMENDED TORQUE 8 IN-LBS.
 - ③ - ALARM CONTACTS: SET SCREW TYPE ACCEPTS 26-14 AWG. 125VDC OR 125VAC. MAXIMUM SWITCHING POWER 30 WATTS DC OR 60 VA AC (RESISTIVE LOAD). RELAY CHANGES STATE WHEN FUSE FAILS ONLY. RECOMMENDED TORQUE 8 IN-LBS.
 - ④ - OTHER EQUIPMENT CONNECTION TYPES AVAILABLE: TAB OR WIRE WRAP
 - ⑤ - ALARM/POWER INDICATOR: RED/GREEN LED TYPE.
 - ⑥ - FUSE HOLDER: ACCEPTS GMT TYPE FUSES UP TO 15A PER POSITION (60 AMPS MAX. PER SIDE). 10, 20, AND 10/10 POSITION BOXES ALSO AVAILABLE.
 - ⑦ - DESIGNATION: CARD FOR EQUIPMENT/FUSE IDENTIFICATION.
 - ⑧ - MOUNTING: FLUSH, 4 OR 5 INCH MOUNTING. 19 AND 23 INCH MOUNTING BRACKETS INCLUDED (19 SHOWN).
 - ⑨ - FRAME IS .080" ALUMINUM, CLEAR ANODIZED FINISH STANDARD. OTHER FINISHES AND CUSTOM SILKSCREENS CAN BE SUPPLIED.
 - 10- PANEL CAN BE SUPPLIED WITH FUSES INSTALLED.



1/4 X 1/2
SLOT TYP
4 PLACES

PART NO.	DESCRIPTION
7570421001	-48VDC
7570421002	-24VDC
7570421003	+24VDC
7570421004	+12VDC

TRIMM, INC.
CONTACT INFORMATION
407 RAILROAD ST.
BUTNER, NC 27509
PHONE: 800-298-7466
FAX: 919-575-6200
WWW.TRIMMINC.COM



The information on this document is proprietary information that is property of Trimm, Inc. and shall not be reproduced or its contents disclosed in any manner whatsoever without the express written consent from Trimm, Inc. Due to continuous product development, specifications may change from those listed. Call Trimm, Inc. for information.

SCALE: NONE TOLERANCES: ±.005, ±1/64, ±.5°

ISSUE: B 01/17/06 BEB CONF. STRAIGHT THRU WIRING TO NEW STANDARDS	DRAWN BY:	FILE CODE:	SIZE:	DESCRIPTION:	REV.
	NUL	MKT	B		
	DATE:			DRAWING NUMBER:	
	11/07/95			7570421000	
PHONE:					PAGE:
1-919-575-6100					1 OF 1