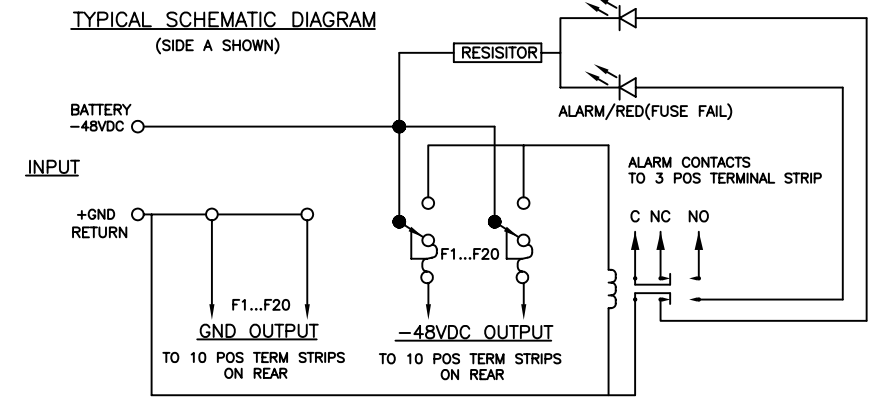
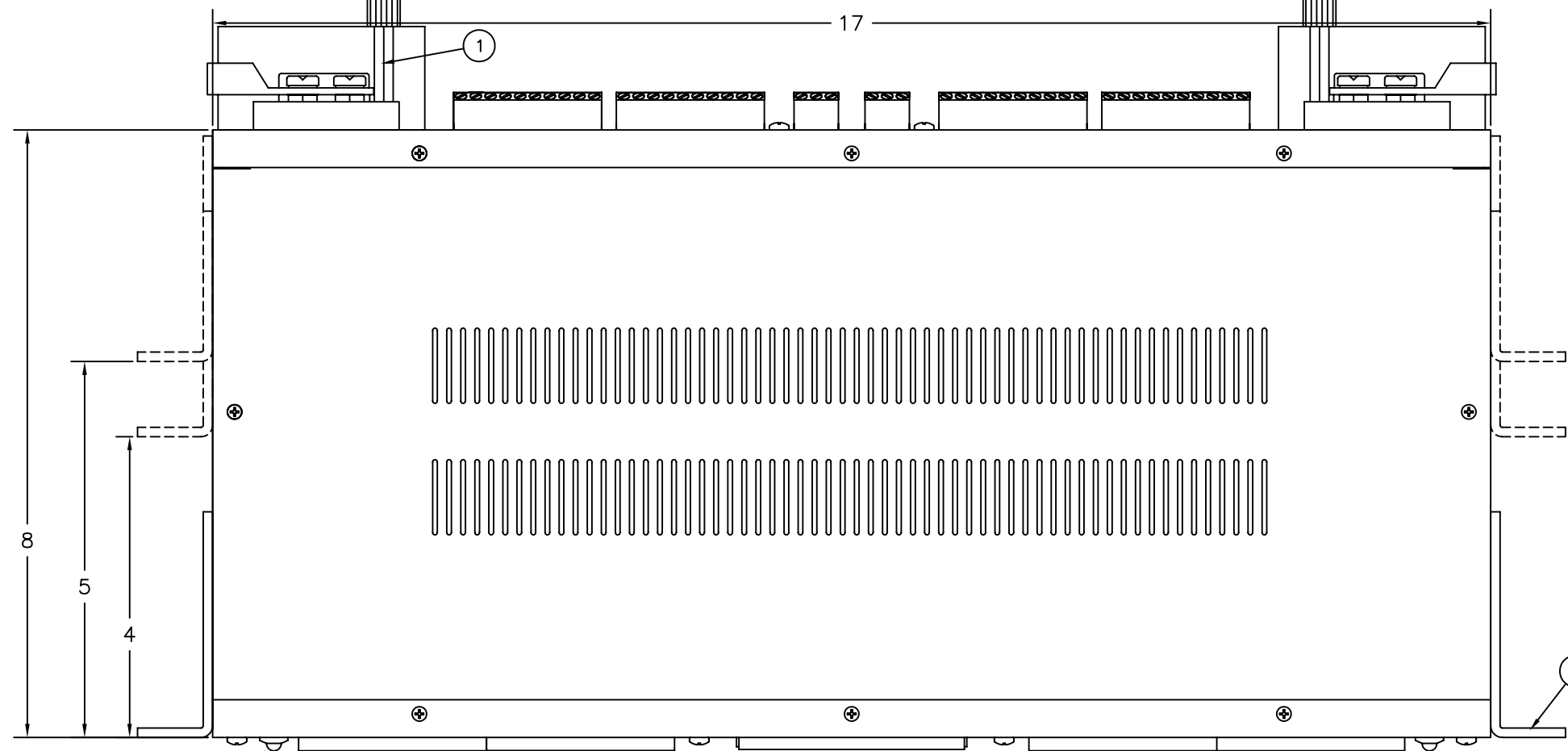


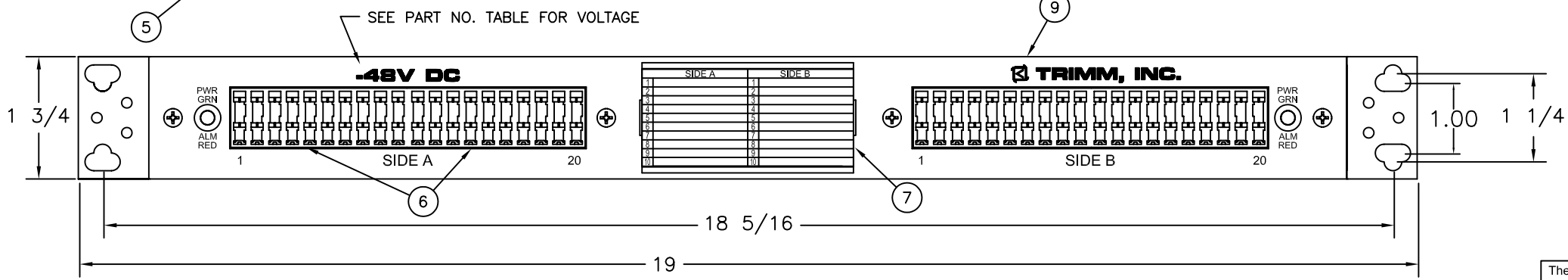
REAR VIEW ROTATED

- NOTES:
- ① - INPUT: TWO HOLE STUD TYPE FOR BATTERY INPUT AND GROUND CONNECTION. 6 AWG. COMPRESSION LUG PROVIDED. RECOMMENDED TORQUE 24 IN-LBS.
 - ② - EQUIPMENT CONNECTIONS: SET SCREW TYPE ACCEPTS 26-14 AWG. RECOMMENDED TORQUE 8 IN-LBS.
 - ③ - ALARM CONTACTS: SET SCREW TYPE ACCEPTS 26 AWG. 125VDC OR 125VAC. MAXIMUM SWITCHING POWER 30 WATTS DC OR 60 VA AC (RESISTIVE LOAD). RELAY CHANGES STATE WHEN FUSE FAILS ONLY. RECOMMENDED TORQUE 8 IN-LBS.
 - 4 - OTHER EQUIPMENT CONNECTION TYPES AVAILABLE: TAB OR WIRE WRAP
 - ⑤ - ALARM/POWER INDICATOR: RED/GREEN LED TYPE.
 - ⑥ - FUSE HOLDER: ACCEPTS GMT TYPE FUSES UP-TO 15 AMPS PER POSITION (60 AMPS MAX. PER SIDE). 10, 20, AND 10/10 POSITION BOXES ALSO AVAILABLE.
 - ⑦ - DESIGNATION: CARD FOR EQUIPMENT/FUSE IDENTIFICATION.
 - ⑧ - MOUNTING: FLUSH, 4 OR 5 INCH MOUNTING. 19 AND 23 INCH MOUNTING BRACKETS INCLUDED (19 SHOWN).
 - ⑨ - FRAME IS .080" ALUMINUM, CLEAR ANODIZED FINISH STANDARD. OTHER FINISHES AND CUSTOM SILKSCREENS CAN BE SUPPLIED.
 - 10- PANEL CAN BE SUPPLIED WITH FUSES INSTALLED.
 - 11-PLASTIC COVER W.ONE CAPTIVE SCREW SUPPLIED AS A KIT



PART NO.	DESCRIPTION
7570221001	-48VDC
7570221002	-24VDC
7570221003	+24VDC
7570221004	+12VDC

TRIMM, INC.
CONTACT INFORMATION
407 RAILROAD ST.
BUTNER, NC 27509
PHONE: 800-298-7466
FAX: 919-575-6200
WWW.TRIMMINC.COM



The information on this document is proprietary information that is property of Trimm, Inc. and shall not be reproduced or its contents disclosed in any manner whatsoever without the express written consent from Trimm, Inc. Due to continuous product development, specifications may change from those listed. Call Trimm, Inc. for information.

SCALE: NONE TOLERANCES: ±.005, ±1/64, ±.5°

ISSUE: C 6-11-96 JP ECN#: 96052901 ADDED STUD COVERS ADDED NOTE 11 ISSUE: B 12/07/95 LMG ECN#: NONE 60 AMPS MAX WAS 30; STANDARDIZED NOTES	DRAWN BY: NJL	DATE: 05/24/95	SIZE: B	DESCRIPTION: OV-BOX 20/20 STUD IN/SET SCREW OUT 60A MAX/SIDE (-48VDC SHOWN)	REV. C
	PHONE: 1-919-575-6100				DRAWING NUMBER: 7570221000m
TRIMM, INC.					