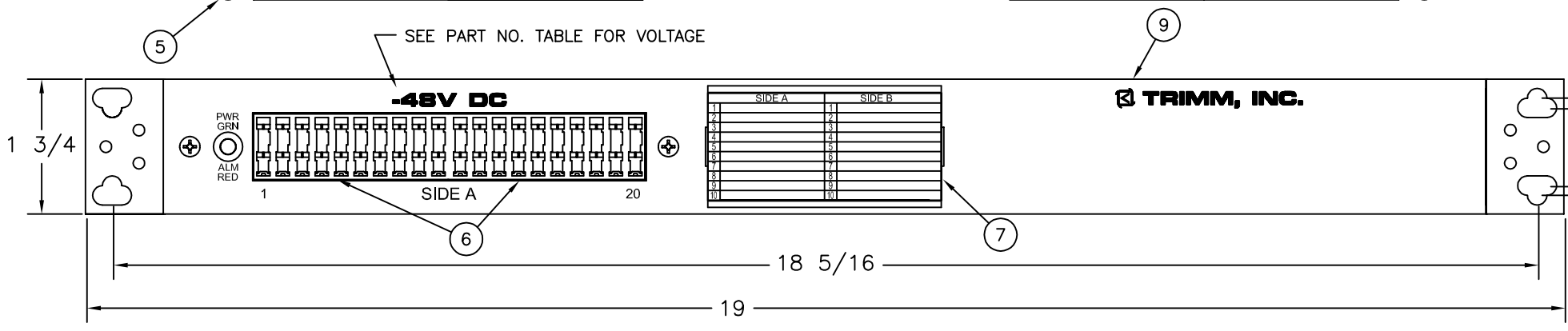
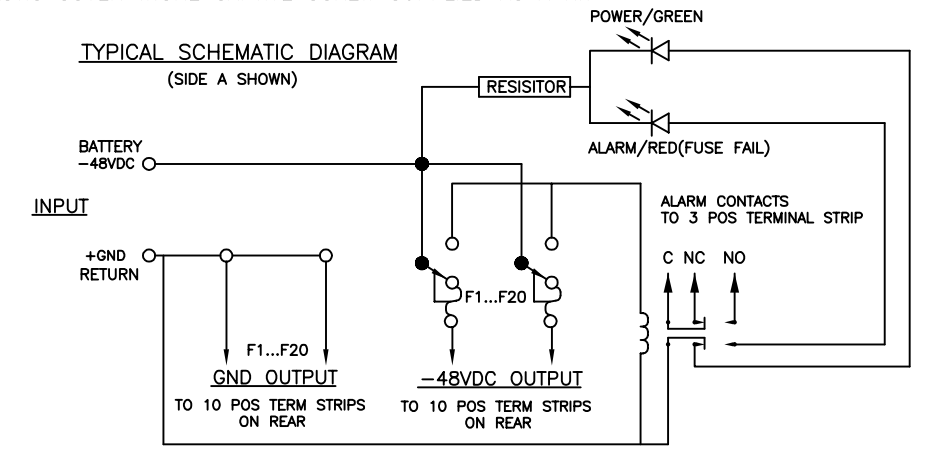
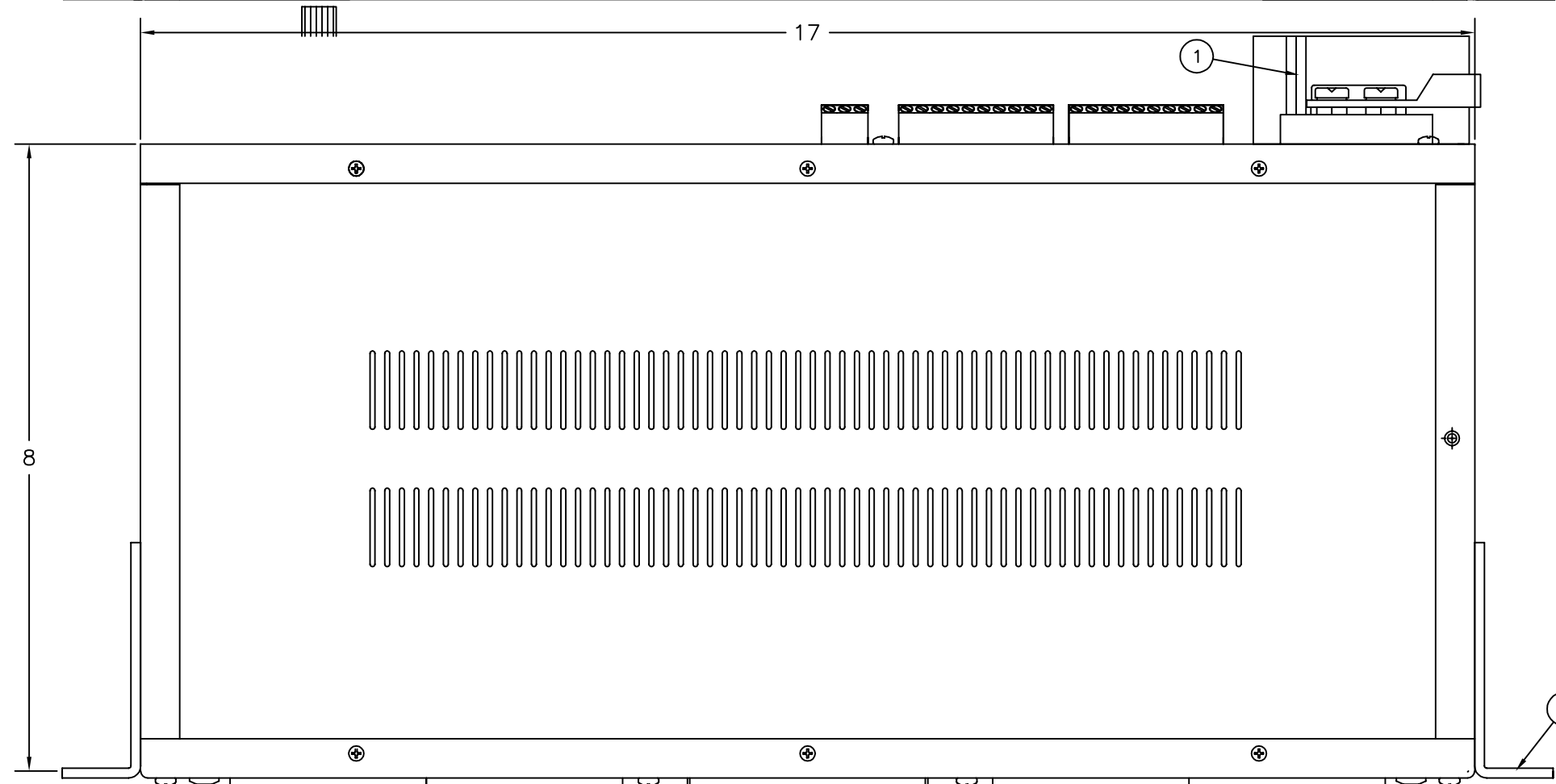


REAR VIEW ROTATED

NOTES:

- ① - INPUT: TWO HOLE STUD TYPE FOR BATTERY INPUT AND GROUND CONNECTION. 6 AWG. COMPRESSION LUG PROVIDED. RECOMMENDED TORQUE 24 IN-LBS.
- ② - EQUIPMENT CONNECTIONS: SET SCREW TYPE ACCEPTS 26-14 AWG. RECOMMENDED TORQUE 8 IN-LBS.
- ③ - ALARM CONTACTS: SET SCREW TYPE ACCEPTS 26-14 AWG. 125VDC OR 125VAC. MAXIMUM SWITCHING POWER 30 WATTS DC OR 60 VA AC (RESISTIVE LOAD). RELAY CHANGES STATE WHEN FUSE FAILS ONLY. RECOMMENDED TORQUE 8 IN-LBS.
- 4 - OTHER EQUIPMENT CONNECTION TYPES AVAILABLE: TAB OR WIRE WRAP
- ⑤ - ALARM/POWER INDICATOR: RED/GREEN LED TYPE.
- ⑥ - FUSE HOLDER: ACCEPTS GMT TYPE FUSES UP-TO 15 AMPS PER POSITION (60 AMPS MAX. PER SIDE). 10, 20/20, AND 10/10 POSITION BOXES ALSO AVAILABLE.
- ⑦ - DESIGNATION: CARD FOR EQUIPMENT/FUSE IDENTIFICATION.
- ⑧ - MOUNTING: FLUSH, 4 OR 5 INCH MOUNTING. 19 AND 23 INCH MOUNTING BRACKETS INCLUDED (19 SHOWN).
- ⑨ - FRAME IS .080" ALUMINUM, CLEAR ANODIZED FINISH STANDARD. OTHER FINISHES AND CUSTOM SILKSCREENS CAN BE SUPPLIED.
- 10- PANEL CAN BE SUPPLIED WITH FUSES INSTALLED.
- 11-PLASTIC COVER W.ONE CAPTIVE SCREW SUPPLIED AS A KIT



PART NO.	DESCRIPTION
7570220001	-48VDC
7570220002	-24VDC
7570220003	+24VDC
7570220004	+12VDC

REVISIONS	APPROVED BY	DATE	OV-BOX 20 STUD IN/SET SCREW OUT 60 AMPS MAX (-48VDC SHOWN)	
	CK. BY:	DATE	SIZE	ISSUE
	B. BURCH	11/14/01	B	A
			FILE CODE	DRAWING NO.
		MKT	7570220000	
		PHONE: 708-362-3700	FAX: 708-680-3888	
		LIBERTYVILLE	TRIMM, INC.	
			ILLINOIS	