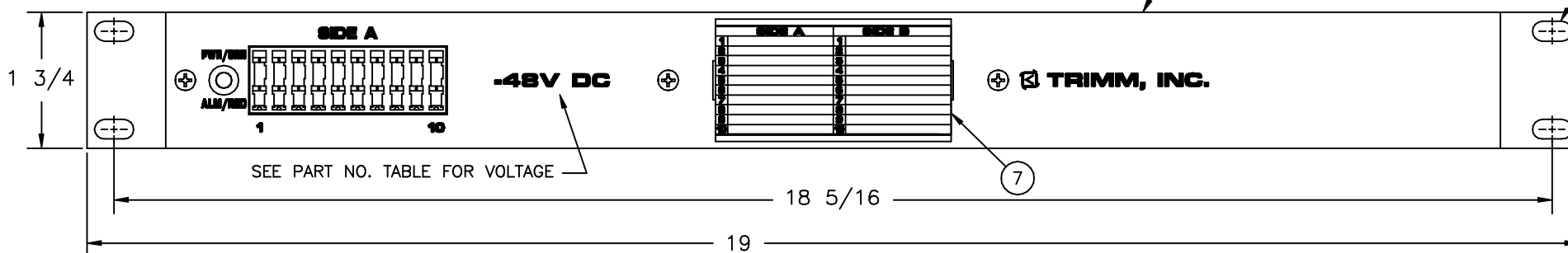
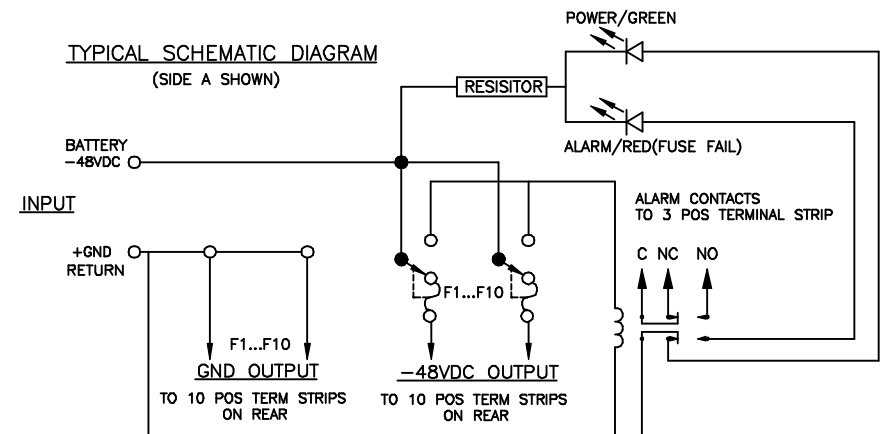
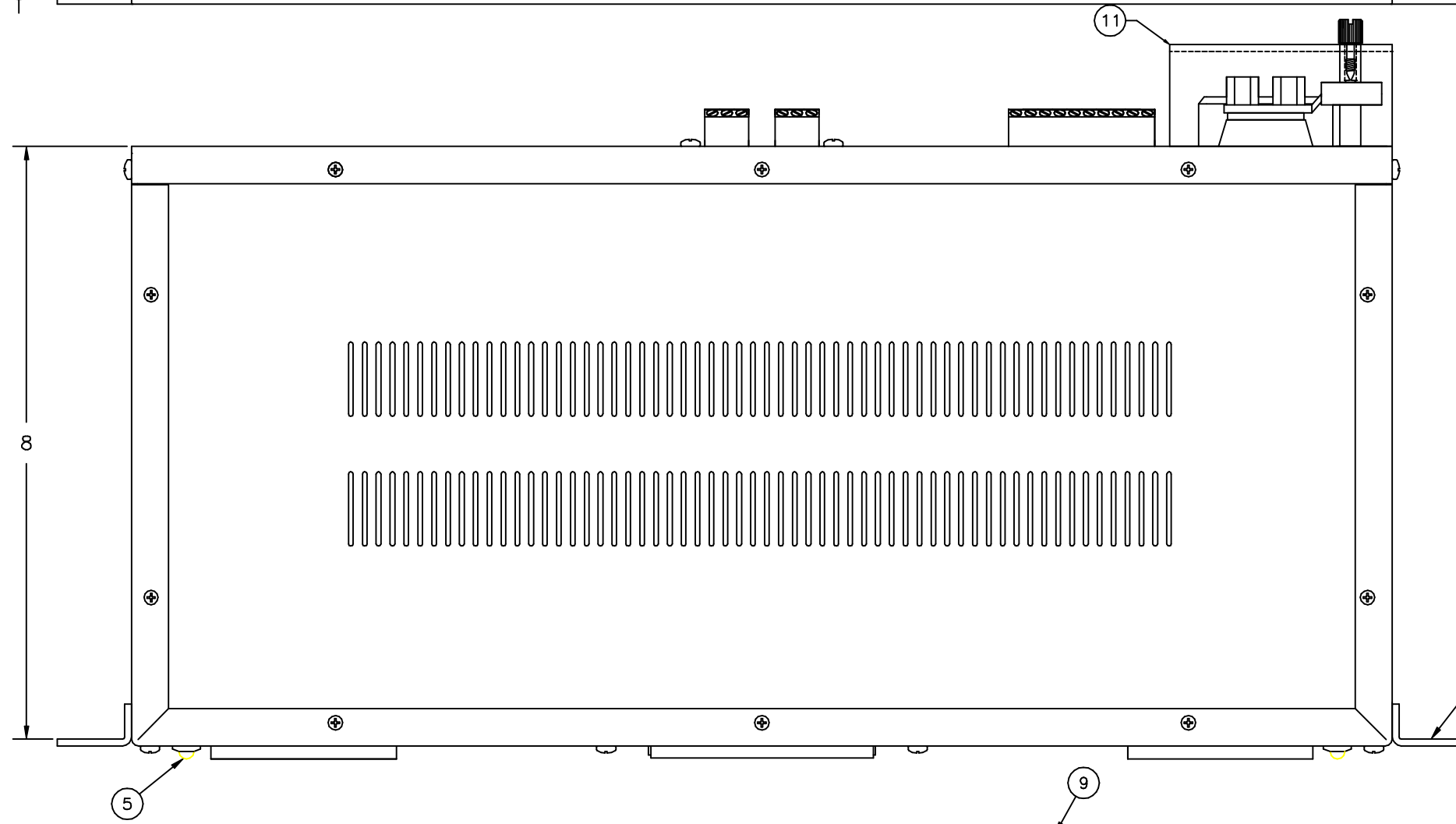


REAR VIEW ROTATED

NOTES:

- ① - INPUT: TWO HOLE STUD TYPE FOR BATTERY INPUT AND GROUND CONNECTION. 6 AWG. COMPRESSION LUG PROVIDED.
- ② - EQUIPMENT CONNECTIONS: SET SCREW TYPE ACCEPTS 26-14 AWG.
- ③ - ALARM CONTACTS: SET SCREW TYPE ACCEPTS 26-14 AWG. 125VDC OR 125VAC. MAXIMUM SWITCHING POWER 30 WATTS DC OR 60 VA AC (RESISTIVE LOAD). RELAY CHANGES STATE WHEN FUSE FAILS ONLY.
- 4 - OTHER EQUIPMENT CONNECTION TYPES AVAILABLE: TAB OR WIRE WRAP
- ⑤ - ALARM/POWER INDICATOR: RED/GREEN LED TYPE.
- ⑥ - FUSE HOLDER: ACCEPTS GMT TYPE FUSES UP TO 15 AMPS PER POSITION (60 AMPS MAX. PER SIDE). 10/10, 20, AND 20/20 POSITION BOXES ALSO AVAILABLE.
- ⑦ - DESIGNATION: CARD FOR EQUIPMENT/FUSE IDENTIFICATION.
- ⑧ - MOUNTING: FLUSH, 4 OR 5 INCH MOUNTING. 19 AND 23 INCH MOUNTING BRACKETS INCLUDED (19 SHOWN).
- ⑨ - FRAME FINISH IS CLEAR ANODIZED STANDARD. OTHER FINISHES AND CUSTOM SILKSCREENS CAN BE SUPPLIED.
- 10 - PANEL CAN BE SUPPLIED WITH FUSES INSTALLED.
- ⑪ - PLASTIC COVER W/ONE CAPTIVE PANEL SCREW SUPPLIED AS A KIT



PART NO.	VOLTAGE
7570218001	-48VDC
7570218002	-24VDC
7570218003	+24VDC
7570218004	+12VDC

REVISIONS	APPROVED BY	DATE	FUZE PANEL OV-BOX, 10 POSITION, (-48VDC SHOWN) 60 AMPS MAX./SIDE				
	CK. BY:	DRAWN BY					
			05/25/00	SIZE	FILE CODE	DRAWING NO.	ISSUE
			B	MKT	7570218000	A	
			PHONE:	LIBERTYVILLE		FAX:	ILLINOIS
			708-362-3700	TRIMM, INC.		708-680-3888	