



## Specifications

**Voltage Rating**  
170 VDC

**Interrupt Rating**  
100,000 Amps

**Manufacturer**  
Cooper Bussmann®

## Benefits

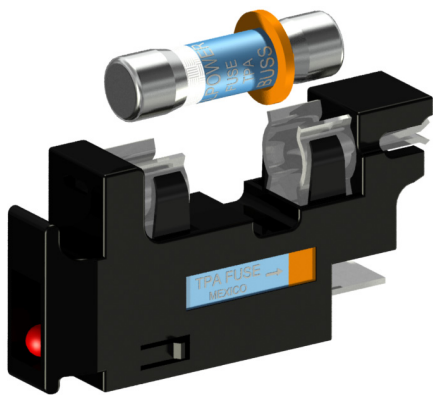
- The TPA Holder is UL Recognized as a disconnect switch for the interruption of load current by means of pulling the fuse carrier out.
- Current-limiting capability.
- High powered fuse in a small package.
- LED on TPA Fuse Carrier allows quick identification of blown fuse.
- Orange ring on fuse guarantees correct orientation in fuse carrier.

## Used In Trimm Panels

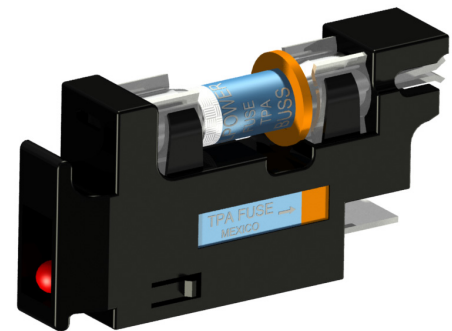
- 737 Series TPA Fuse Panels
- 827 Series TPA/GMT Fuse Panels
- Select 847 Series Total Front Access Combination Fuse Panels

## Ordering Guide

Part Number	Description	Designation
7500192003	3 Amp Fuse	TPA-3
7500192005	5 Amp Fuse	TPA-5
7500192010	10 Amp Fuse	TPA-10
7500192015	15 Amp Fuse	TPA-15
7500192020	20 Amp Fuse	TPA-20
7500192025	25 Amp Fuse	TPA-25
7500192030	30 Amp Fuse	TPA-30
7500192040	40 Amp Fuse	TPA-40
7500192050	50 Amp Fuse	TPA-50
7500192001	TPA 5 Position Spare Fuse Holder	
7500192901	Spare TPA Fuse Carrier	

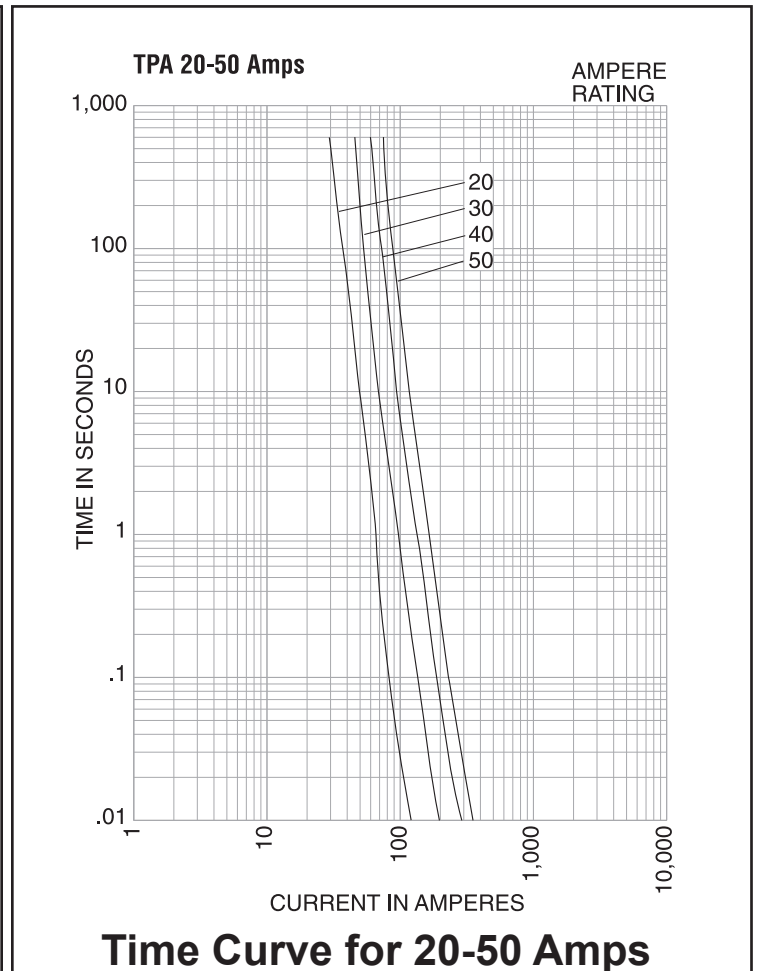
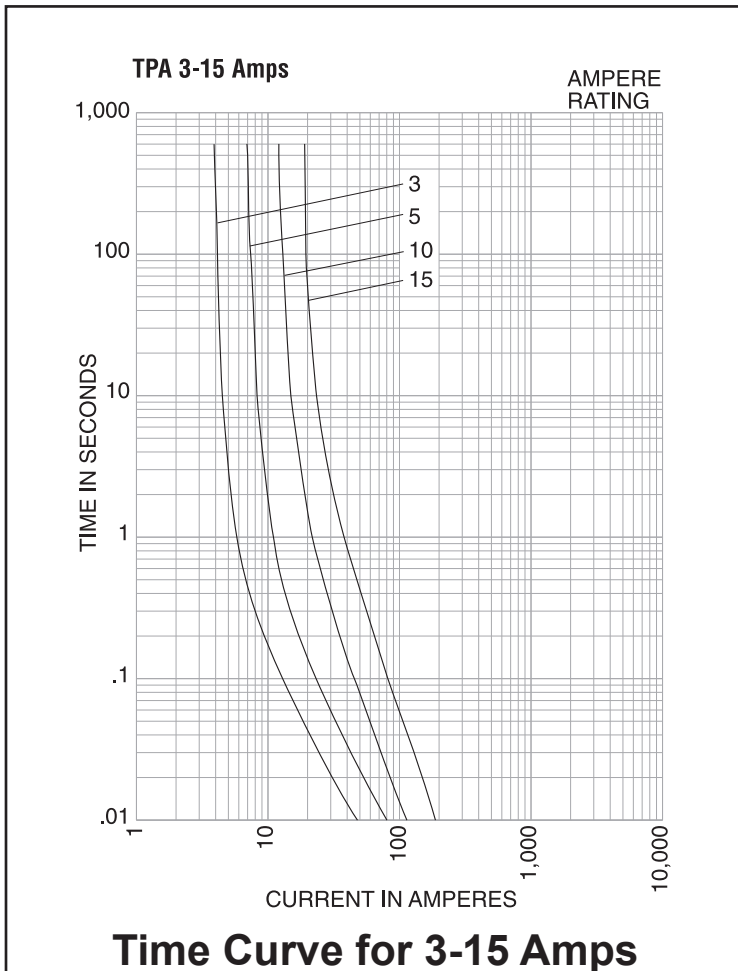
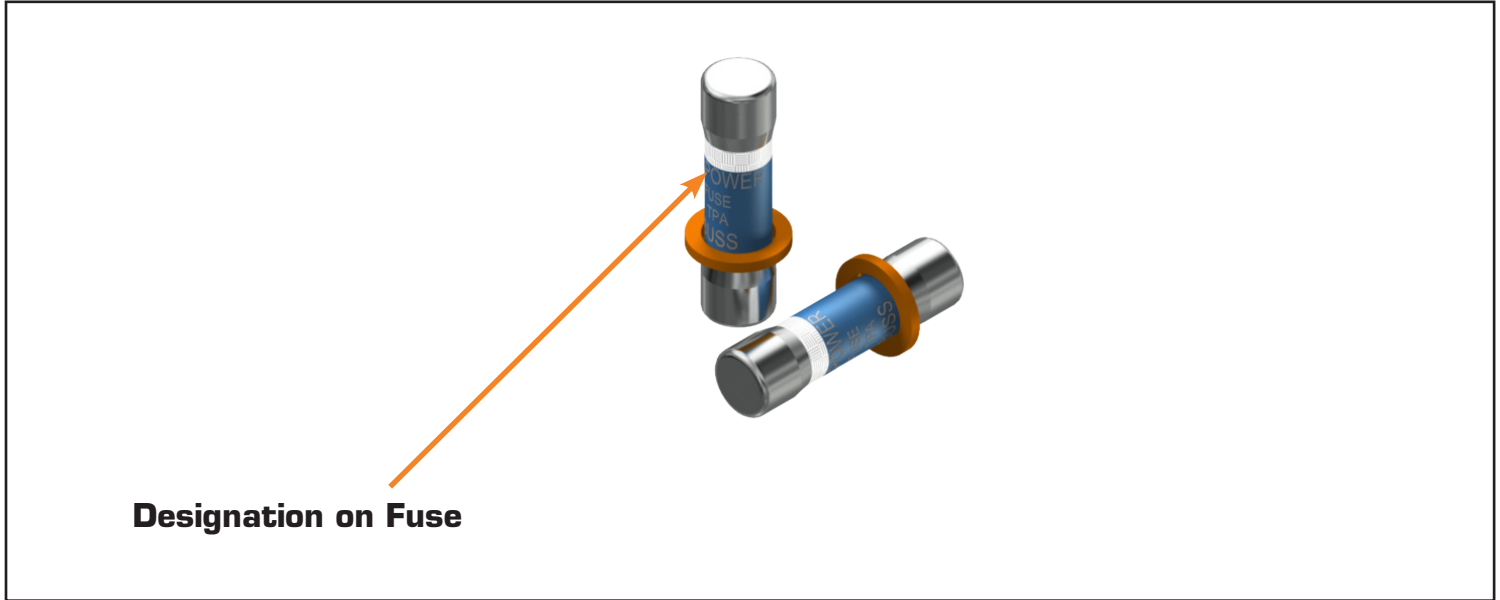


**TPA Fuse outside Fuse Carrier**



**TPA Fuse installed in Fuse Carrier**

# TPA Fuses



## NOTES