

## Specifications

### 0300163111

For Use with Clear Anodized Frames

### 0300163121

For Use with Black Frames

### 7500296431

Swing Hinge For Use with Optimum Value GMT Fuse Panels

### 9000190101

Offset for Use with OV Breaker Panels



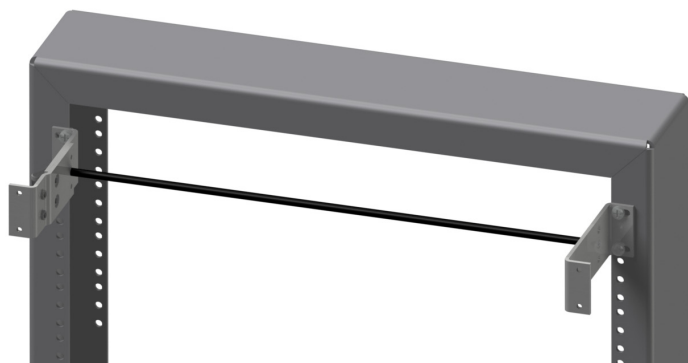
7571019001 with 0300163111 Installed Shown

### Ordering Guide

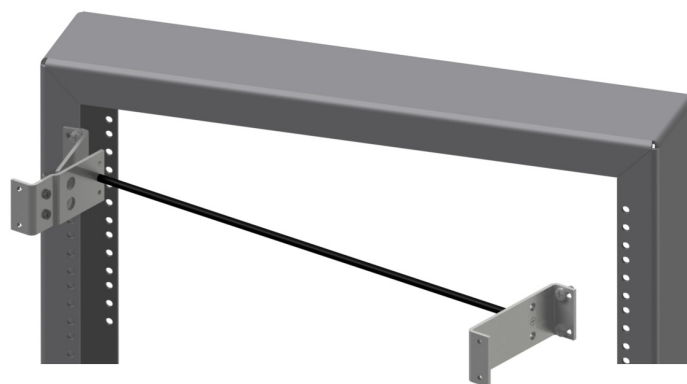
Part Number	Description
0300163111	Rack Adaptor Kit, 1U, 19 to 23 Inch, EIA Hole Spacing, Clear Anodized
0300163121	Rack Adaptor Kit, 1U, 19 to 23 Inch, WECO/EIA Hole Spacing, Black Steel
7500296431	Rotating Hinge Kit, 19" Width, 4.5" Offset, Cable Management Bar Included
9000190101	Rack Adaptor Kit, 1U, 2.25" Offset, Black

## Benefits

- Innovative design of the 7500296431 allows you to mount the panel to the front of the frame and swing out the panel for access to the rear. It converts an Optimum Value panel into a front access panel.
- The 0300163111 quickly converts a clear anodized Optimum Value panel into a 23" panel.
- The 0300163121 quickly converts a black Optimum Value panel into a 23" panel.



7500296431 Shown attached to rack

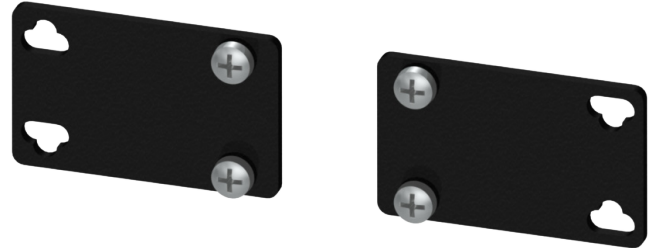


7500296431 Shown swung out from rack

# Rack Adaptors



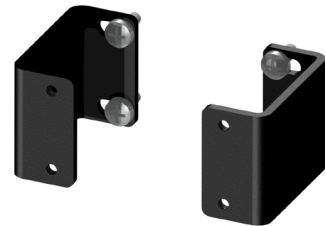
**0300163111 View**



**0300163121 View**



**7500296431 View**



**9000190101 View**

## NOTES