

Specifications

Bussmann® Voltage
60 VDC

Bussmann® Interrupt Rating
450 Amps

Littelfuse® Voltage*
125 VDC

Littelfuse® Interrupt Rating*
450A @ 60 VDC, 300A @ 125 VDC
(up to 15A), 200A @ 125 VDC (20A)

Benefits

- Color Coded ends for quick identification of fuse amperage.
- Splatter covers are available for additional safety.
- Used in telecommunications networks worldwide.
- Compact size allows many lower amperage positions.

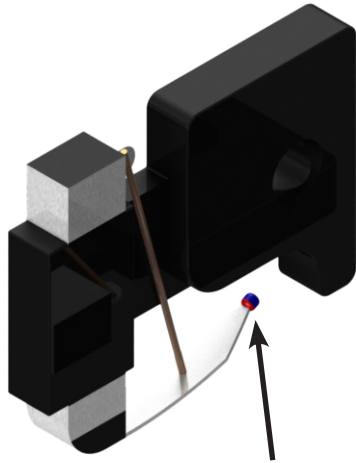
Used In Trimm Panels

- 757 Series Optimum Value GMT Fuse Panels
- 707 Series GMT Fuse Panels
- 817 Series KLM/GMT Fuse Panels
- 837 Series TPM/GMT Fuse Panels
- 827 Series TPA/GMT Fuse Panels
- Select 927 Series Demarcation Panels
- Select 747 Series Total Front Access Fuse Panels
- 847 Series Total Front Access Combination Fuse Panels
- Select 767 Series High Current Power Distribution Units
- Select 787 Series Versatile Fuse/Breaker Panels

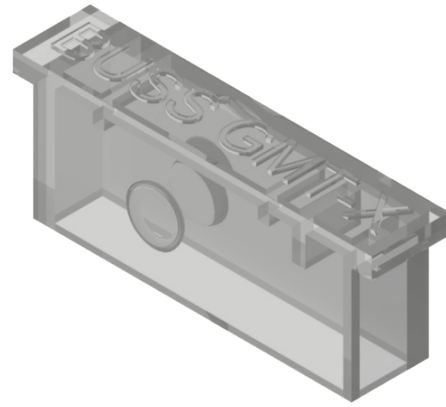
*The 0300097320 is made by Littelfuse®

Ordering Guide		
Part Number	Description	Designation
0300097000	18/100 Amp Fuse	Yellow
0300097001	1/4 Amp Fuse	Violet
0300097016	3/8 Amp Fuse	White/Gray
0300097002	1/2 Amp Fuse	Red
0300097065	65/100 Amp Fuse	Black
0300097003	3/4 Amp Fuse	Brown
0300097004	1 Amp Fuse	Gray
0300097005	1 1/3 Amp	White
0300097006	1 1/2 Amp Fuse	White/Yellow
0300097007	2 Amp Fuse	Orange
0300097008	3 Amp Fuse	Blue
0300097013	3 1/2 Amp Fuse	White/Blue
0300097012	4 Amp Fuse	White/Brown
0300097009	5 Amp Fuse	Green
0300097011	7 1/2 Amp Fuse	Black/White
0300097010	10 Amp Fuse	Red/White
0300097014	12 Amp Fuse	Yellow/Green
0300097015	15 Amp Fuse	Red/Blue
0300097320*	20 Amp Fuse*	Green/White*
0300097100	GMT Dummy Fuse	Grey
0300097200	GMT-A Alarm Fuse for TPS Fuse Holders	Yellow
0300097209	GMT-X Clear Splatter Cover for Bussmann®	

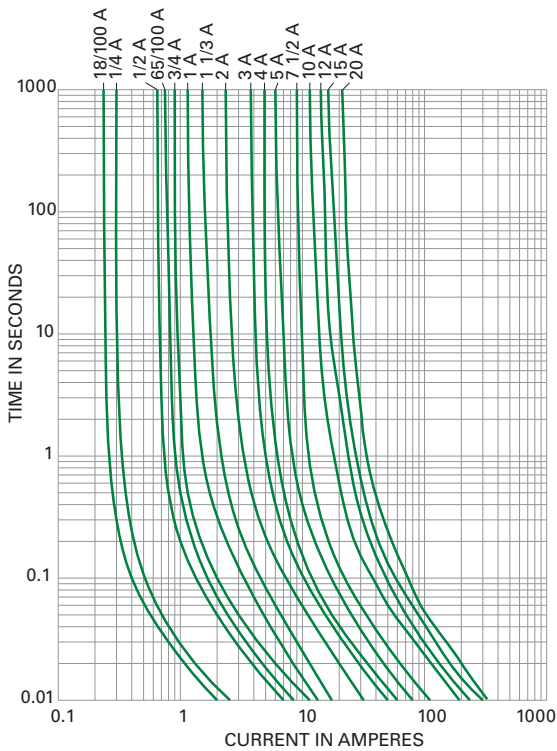
GMT Fuses



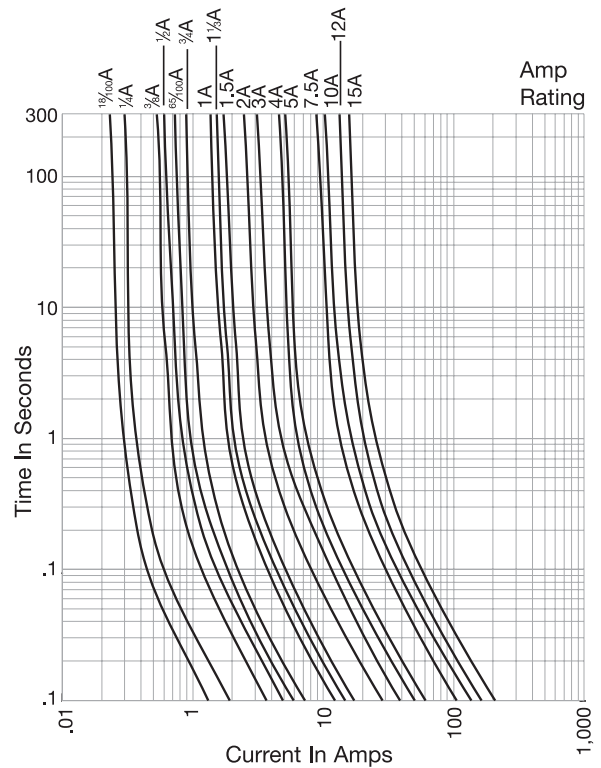
GMT Fuse Designation on fuse.
There is a colored dot that indicates the amperage.



GMT Spatter Cover



The time curve for the 20 Amp GMT Fuse



The time curve for the GMT Fuses up to 15 Amps

NOTES