

7875001011

10/10 Versatile Panel Mini-BDFB/BDCBB



Positions Per Bus
10 Versa-Slots

Max Per Position
125 Amps

Bus Capacity
850 Amps

GENERAL

Dimensions	19.00" W x 8.75" H x 12.00" D
Rack Space	5U
Weight	33 lbs.
Mounting	Universal 19" or 23", WECO or EIA
Mtg Pos.	Flush, 3.5" Offset
Finish	Black Textured Powder Coat
Monitoring	Local voltage & amperage on Bus Display Switch

ELECTRICAL

Input	Nominal Voltage	-/+24-48V DC
	Voltage Range	-/+19-60V DC
	Number of Buses	2
	Intr Device Rating	1000 Amps
Output	Max Rating by Type	*TPS Fuse - 70 Amp *TLS/TPC Fuse - 125A *Must purchase Fuse Holder Single Pole Breaker - 100A Dual Pole Breaker - 150A
	Cont. Load Rating	TPS Fuse - 56 Amp TLS/TPC Fuse - 100A Single Pole Breaker - 80A Dual Pole Breaker - 120A

ALARMING

Indicators	Green (Power)/Red (Alarm), Bus Display Switch
Function	Form C relay contact for remote fuse/breaker fail and power fail indication. The Bus Display Switch shows the bus voltage/amperage, warns if a custom threshold is passed, and provides status.
Conn Type	Solderless Wire Wrap (18 to 30 AWG)
Rating	DC 30W/AC 50VA

CONNECTIONS

Input	2 Hole Lug	3/8" stud x 1" spacing
	Wire Range	Up to 750 kcmil (x2)
	Max. Terminal Width	1.625"
	Tightening Torque	175 in-lb (19.8 Nm)
Output	2 Hole Lug	1/4" stud x 5/8" spacing
	Wire Range	Up to 2/0 AWG
	Max. Terminal Width	0.640"
	Tightening Torque	40 in-lb (4.5 Nm)
Ground Bus	2 Hole Lug	1/4" stud x 5/8" spacing
	Wire Range	Up to 2/0 AWG

ENVIRONMENT

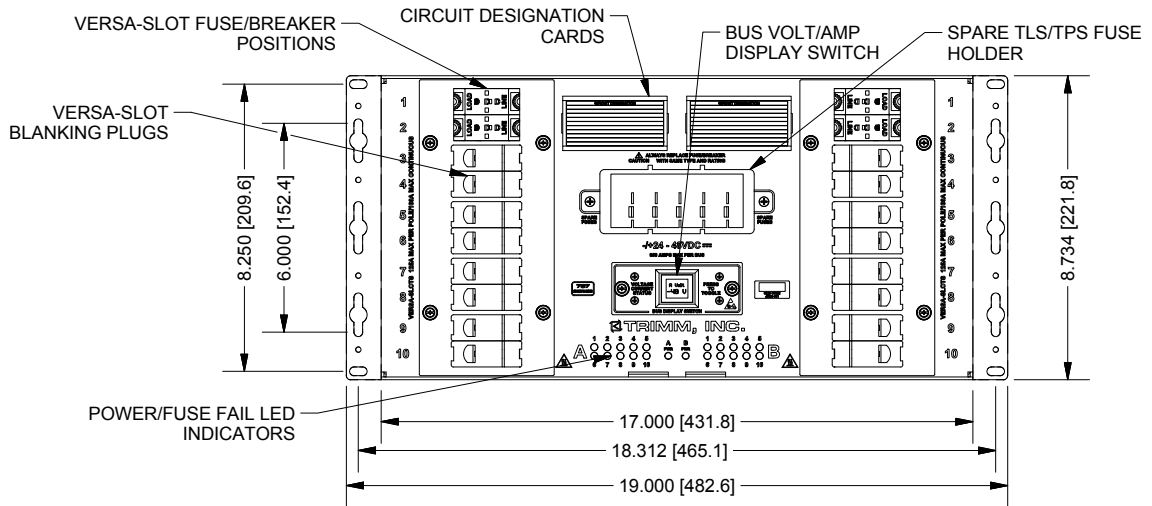
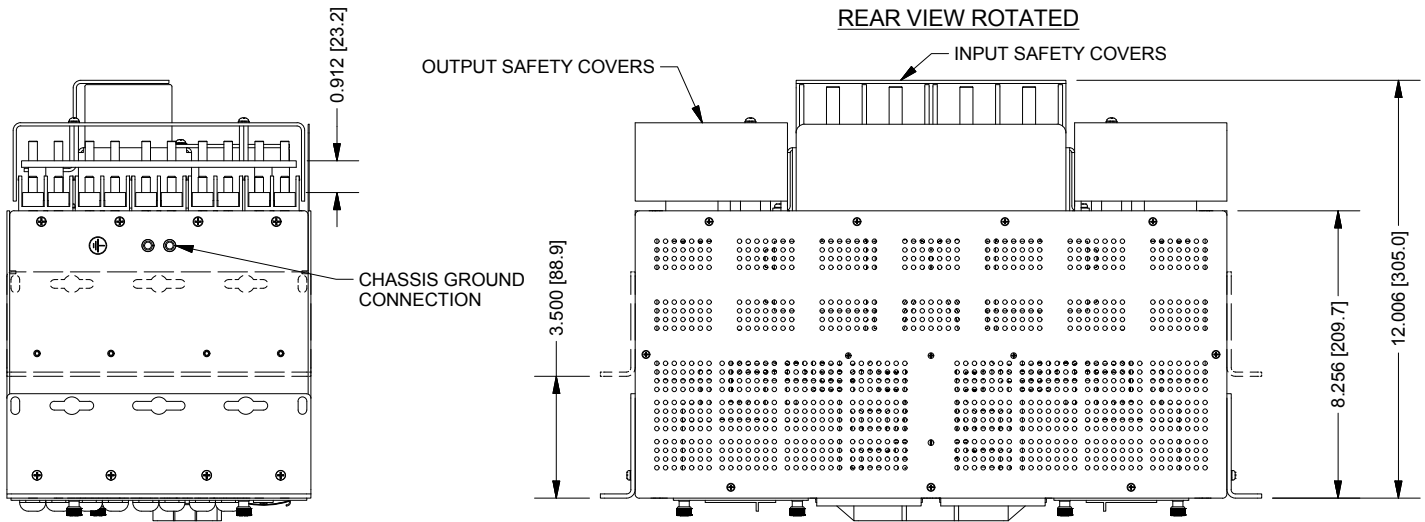
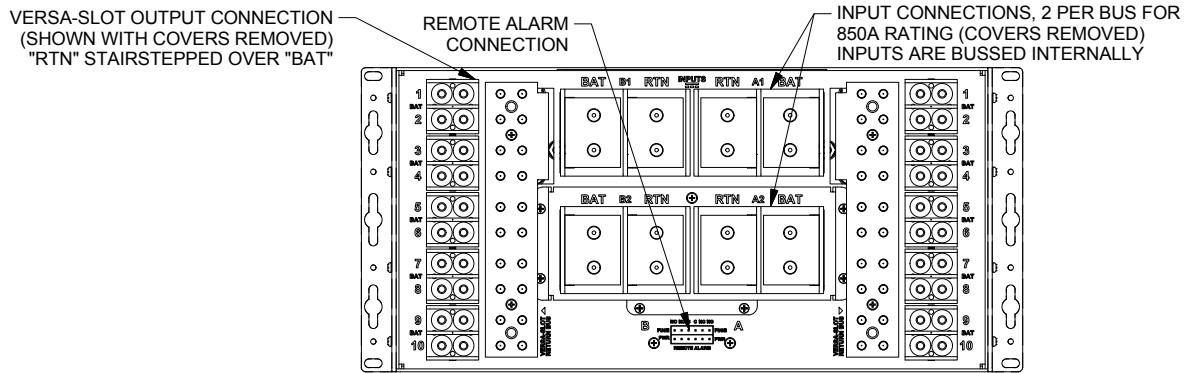
Op Temp	-40° C to +65° C
Ambient	Up to 65° C
Store Temp	-40° C to +70° C
Humidity	0 to 95% non-condensing
Dissipation	205 Watts max

STANDARDS

Safety <small>(Listed)</small>	UL 60950-1/UL 1801/CSA C22.2 No.60950-1/EN 60950-1/IEC 60950-1
Telcordia	NEBS Level 3 (GR-63/GR-1089)

High Current PDU, 10/10 Versa-Slot, w/Bus Display Switch

7875001011



NOTES

Shown with optional TLS/TPS spare fuse holder part number 0300109103. CLEI Code: PWPYADCRRRA. BDFB: Battery Distribution Fuse Bay. BDCBB: Battery Distribution Circuit Breaker Bay. Go to www.trimminc.com for the Fused Disconnects, Single Pole Breakers, or Dual Pole Breakers to use with this panel. If you order TLS, TPS or TPC fuses with this panel, you will also need to order a fused disconnect for each fuse.